



PUMPING AND WATER FILTRATION SOLUTIONS

ASW was founded by the late Mr Arno Wischnewski in 1979 and is still an independent family business. Its head office is based in Johannesburg, South Africa, and its primary business is process pumps and fluid transfer, water purification and filtration equipment.



**WE STRIVE
TO PROVIDE
QUALITY SERVICE
AND
QUALITY PRODUCTS
AT ALL TIMES**



PUMPING AND WATER FILTRATION SOLUTIONS

ASW PROFILE

The company was predominantly involved in the importation of hydraulics and mechanical equipment for the Mines and Petrochemical industry and is still involved in the supply of mechanical and rotating equipment to this industry.

In 1986 ASW moved into its own premises in Johannesburg which is now the Head Office of the group.

Our strong presence in the water and waste water industry in the early 1990's resulted in the establishment of a water treatment division. This division focuses on the supply of equipment into the water industry as well as managing and completing turnkey projects for potable water treatment plants. ASW has also been involved in refurbishments, building completely new plants and numerous installations within the water and waste water industry.

ASW has a proven track record for customer satisfaction. Our business is built on supplying the quality service that the client requires and our on-time deliveries have become a benchmark for our competitors. Before accepting an order, our engineers will always advise the best system or component. The advice will be either in-house or from our overseas expertise.

ASW has been audited by various large organisations in the Petro-Chemical, Paper and Chemical industries and has been placed on their vendor's list for the supply, manufacture and maintenance of systems and components.

Our ultimate ambition is to be a renowned name in Southern Africa by providing world class, value for money products and services.

THE MAJOR MARKETS THAT WE SERVICE ARE

PETRO CHEMICAL

CHEMICAL INDUSTRIES

STEEL INDUSTRIES

FOOD AND BEVERAGE

PAPER INDUSTRIES

SUGAR INDUSTRIES

MINING INDUSTRIES

WATER AND WASTEWATER

POWER GENERATION

REFRIGERATION

ORGANISATION

ASW IS DIVIDED INTO 3 SPECIFIC DIVISIONS

- 1. ROTATING EQUIPMENT**
- 2. WATER FILTRATION AND PURIFICATION**
- 3. ENGINEERING / WORKSHOPS / SERVICE / FABRICATION**

**THE FIRST TWO DIVISIONS ARE
DIRECTLY INVOLVED IN THE MARKETING AND
SALES OF THEIR PRODUCTS AND THE ENGINEERING
DIVISION SUPPORTS SALES IN THE
FOLLOWING WAY:**

- A. DESIGN AND DEVELOPMENT OF NEW SYSTEMS**
- B. DESIGN, INSTALLATION AND COMMISSIONING OF
TURNKEY PROJECTS**
- C. MANUFACTURING AND CONSTRUCTION OF
SYSTEMS AND COMPONENTS**
- D. SERVICING AND MAINTAINING THE PRODUCTS
BOTH ON SITE AND INHOUSE. MAINTENANCE
CONTRACTS ARE CONCLUDED WITH CLIENTS ON
OUR PRODUCTS**
- E. QUALITY ASSURANCE**



RATINGS

B-BBEE VERIFICATION CERTIFICATE

INDEPENDENT VERIFICATION OF COMPLIANCE WITH THE AMENDED CONSTRUCTION SECTOR BBBEE CODES

ASW ENGINEERING (PTY) LTD

53 GERHARDUS STREET, STRIJDOM PARK, 2129

REGISTRATION NUMBER	1979 / 006846 / 07
VAT NUMBER	4840120630
BBBEE CODE	AMENDED CONSTRUCTION SECTOR CODE No. 41287 (2017)
INDUSTRY CATEGORY	CONTRACTOR
TOTAL ANNUAL TURNOVER	GREATER THAN R25 MILLION BUT LESS THAN R50 MILLION
TYPE OF ENTERPRISE	QUALIFYING SMALL ENTERPRISE
APPLICABLE SCORECARD	PARAGRAPH 1.1 STATEMENT CSC603 OF QSE SCORECARD
MEASUREMENT PERIOD	1 MARCH 2021 TO 28 FEBRUARY 2022
BBBEE PROCUREMENT RECOGNITION PERCENTAGE	110%
VERIFICATION CERTIFICATE NUMBER	GMASWQE2023021302

BBBEE STATUS: LEVEL THREE (3) CONTRIBUTOR

SKILLS DEVELOPMENT POINTS	0.00	BLACK OWNERSHIP	51.00 %
SUPPLIER DEVELOPMENT	0.00	BLACK WOMEN OWNERSHIP	0.00 %
TOTAL POINTS EQUIVALENT	92.50	BLACK NEW ENTRANTS	0.00 %
40 % SUB-MINIMUM REQUIREMENT MET	NO	BLACK DESIGNATED GROUP	0.00 %
DISCOUNTING PRINCIPLE APPLIED	YES	BLACK YOUTH	0.00 %
MODIFIED FLOW-THROUGH APPLIED	NO	BLACK PERSONS WITH A DISABILITY	0.00 %
EXCLUSION PRINCIPLE APPLIED	NO	DATE OF RE-ISSUE	02 MARCH 2023
PARTICIPATED IN Y.E.S INITIATIVE	NO	DATE OF EXPIRY	27 FEBRUARY 2024



TECHNICAL SIGNATORY: ANDILE TLHOALE

The information on which this verification certificate is based has been tested for validity and accuracy and reflects an impartial and independent compliance assessment of the measured entity as determined in accordance with the Amended Construction Sector BBBEE Codes (2017)

INFORCOMM (PTY) LTD, PEGASUS BUILDING 1, 210 AMARAND AVENUE, MENLYN MAINE, PRETORIA

EMAIL: inforcomm@inforcomm.co.za

GMASWQE2023021302

Page 1 of 1

WE CURRENTLY HOLD SOLE AGENCIES FOR THE FOLLOWING PRODUCTS

ROTATING EQUIPMENT

MUNSCH Chemical Plastic Pumps
HERMETIC Canned Motor Pumps
DELASCO Peristaltic Pumps
NOVA ROTORS Progressive Cavity Pumps
LEISTRITZ Screw Pumps
EBARA Chemical Norm and Process
Pumps DICKOW Pumpen
ASW Water Pumps
ATLAS COPCO
FINDER Pompe
GRUPPO ATTURIA

WATER TREATMENT

KSH Filter Strainers
CADAR Monolithic Filter Floor Systems
FAM Filters
YAMIT Mobile Water Treatment Plants
TEKLEEN Automatic Self Cleaning Filters

ENGINEERING OFFERS

MACHINING WORKSHOP

Turning

Surface Grinding

Production Run Machining

Milling

Small Quantity Machining

Precision Machining

MECHANICAL & ELECTRICAL WORKSHOPS

We Repair Various Types of Pumps:

Centrifugal Pumps

Peristaltic Pumps

Progressive Cavity Pumps

Compressors

Dosing Pumps

Canned Motor Pumps

Magnetic Drive Pumps

Gearboxes, Hydrostatic Drives

We also Repair Hydraulic Equipment Including:

Cylinders

Pumps

Motors

Power-Packs

Valves

Lubrication Equipment

Hydraulic Control Stations

Our Service Department does:

On Site Installations

Service Contracts

Upgrades

On Site Repairs

Refurbishments

Commissioning

ASW SERVICES

MECHANICAL WORKSHOP

In-house repairs to our range of products and any brand of rotating equipment including hydraulics.

Strip, inspect, quote, repair / assemble and test.



SERVICE DEPARTMENT

24 Hour on site repairs and servicing of our products and all types of rotating equipment.

On site maintenance and inspection contracts for extended periods can be negotiated with clients.

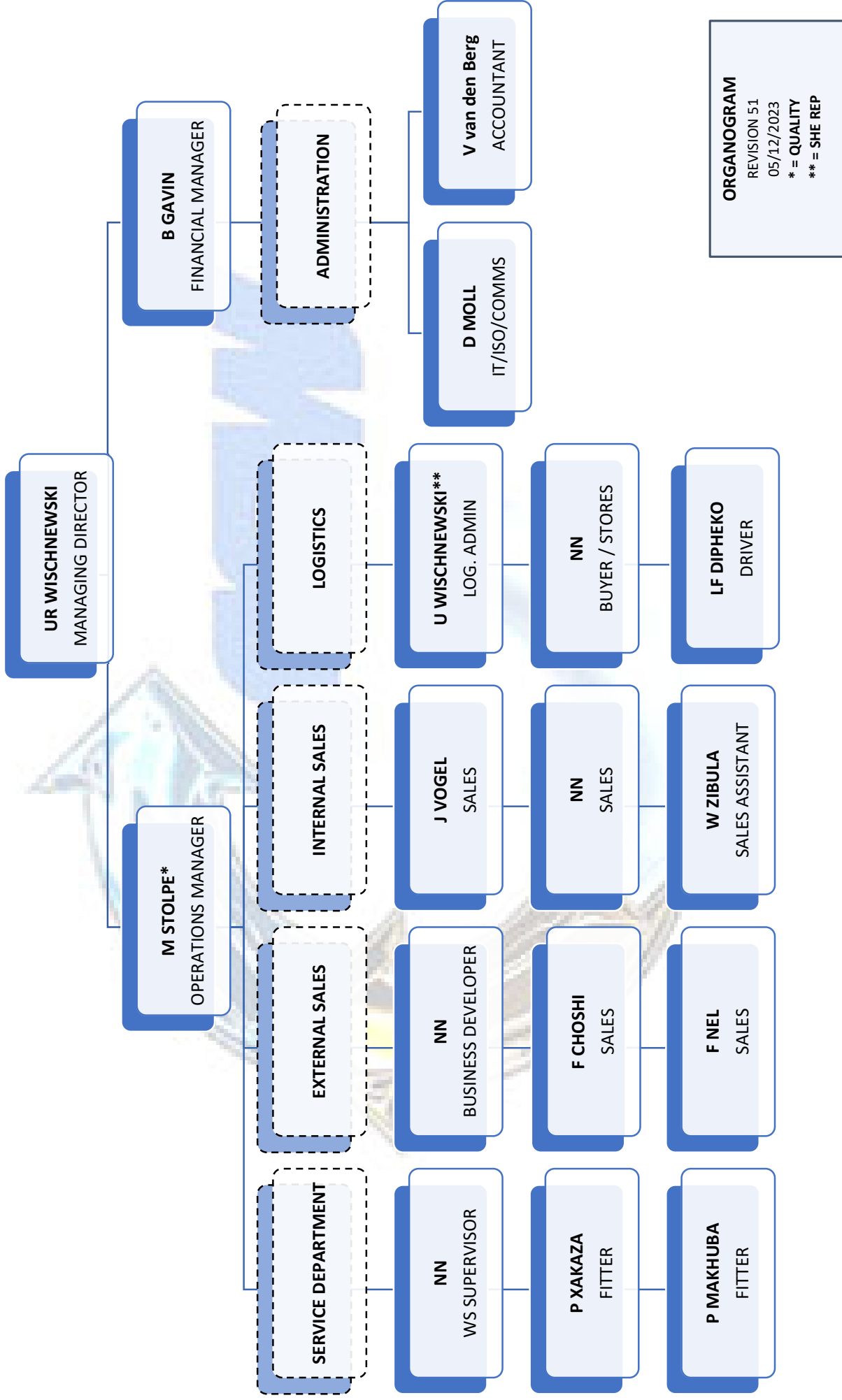


MACHINING WORKSHOP

Precision machining for one-off or high volume quantities can be done.



ASW Engineering Organization Chart



OUR CUSTOMERS



THIS IS HOW YOU CAN CONTACT ASW

AT OUR HEAD OFFICE IN JOHANNESBURG

**53 GERHARDUS STREET
STRIJDOM PARK
RANDBURG
JOHANNESBURG
SOUTH AFRICA**

**PO BOX 814
RANDBURG
SOUTH AFRICA
2125**

TEL: +27 (0)11 793 1330

EMAIL: sales@asw.co.za

WEB: www.asw.co.za