



## **PUMPING AND WATER FILTRATION SOLUTIONS**

**ASW was founded by the late Mr Arno Wischnewski in 1979 and is still an independent family business. Its head office is based in Johannesburg, South Africa, and its primary business is process pumps and fluid transfer, water purification and filtration equipment.**



**WE STRIVE  
TO PROVIDE  
QUALITY SERVICE  
AND  
QUALITY PRODUCTS  
AT ALL TIMES**



**PUMPING AND WATER FILTRATION SOLUTIONS**

# ASW PROFILE

The company was predominantly involved in the importation of hydraulics and mechanical equipment for the Mines and Petrochemical industry and is still involved in the supply of mechanical and rotating equipment to this industry.

In 1986 ASW moved into its own premises in Johannesburg which is now the Head Office of the group.

Our strong presence in the water and waste water industry in the early 1990's resulted in the establishment of a water treatment division. This division focuses on the supply of equipment into the water industry as well as managing and completing turnkey projects for potable water treatment plants. ASW has also been involved in refurbishments, building completely new plants and numerous installations within the water and waste water industry.

ASW has a proven track record for customer satisfaction. Our business is built on supplying the quality service that the client requires and our on-time deliveries have become a benchmark for our competitors. Before accepting an order, our engineers will always advise the best system or component. The advice will be either in-house or from our overseas expertise.

ASW has been audited by various large organisations in the Petro-Chemical, Paper and Chemical industries and has been placed on their vendor's list for the supply, manufacture and maintenance of systems and components.

Our ultimate ambition is to be a renowned name in Southern Africa by providing world class, value for money products and services.

## THE MAJOR MARKETS THAT WE SERVICE ARE

**PETRO CHEMICAL**

**CHEMICAL INDUSTRIES**

**STEEL INDUSTRIES**

**FOOD AND BEVERAGE**

**PAPER INDUSTRIES**

**SUGAR INDUSTRIES**

**MINING INDUSTRIES**

**WATER AND WASTEWATER**

**POWER GENERATION**

**REFRIGERATION**

# **ORGANISATION**

## **ASW IS DIVIDED INTO 3 SPECIFIC DIVISIONS**

- 1. ROTATING EQUIPMENT**
- 2. WATER FILTRATION AND PURIFICATION**
- 3. ENGINEERING / WORKSHOPS / SERVICE / FABRICATION**

**THE FIRST TWO DIVISIONS ARE  
DIRECTLY INVOLVED IN THE MARKETING AND  
SALES OF THEIR PRODUCTS AND THE ENGINEERING  
DIVISION SUPPORTS SALES IN THE  
FOLLOWING WAY:**

- A. DESIGN AND DEVELOPMENT OF NEW SYSTEMS**
- B. DESIGN, INSTALLATION AND COMMISSIONING OF  
TURNKEY PROJECTS**
- C. MANUFACTURING AND CONSTRUCTION OF  
SYSTEMS AND COMPONENTS**
- D. SERVICING AND MAINTAINING THE PRODUCTS  
BOTH ON SITE AND INHOUSE. MAINTENANCE  
CONTRACTS ARE CONCLUDED WITH CLIENTS ON  
OUR PRODUCTS**
- E. QUALITY ASSURANCE**



# MOLOTO BEE

Construction QSE B-BBEE Verification Certificate Issued to:

## ASW ENGINEERING (PTY) LTD

Address: Clearview Office Park, Block C Unit 12, Wilhelmina Avenue, Constantia Kloof, 1709

Registration no: 1979/006846/07

VAT no: 4840120630

### LEVEL 3 (THREE) CONTRIBUTOR

PROCUREMENT RECOGNITION LEVEL: 110%

B – BBEE Scorecard & Size	Amended Construction Sector Code - QSE
Black Ownership	51.00 %
Black Women Ownership	13.60 %
Modified Flow Through Applied	N/A
Discounted	Yes
Black Designated Group Supplier	0.00 %
Black Youth Ownership	0.00 %
Black Disabled	0.00 %
Black People in Rural Areas	0.00 %
Black Military Veterans	0.00 %

B-BBEE Scorecard	Construction – Contractor
Exclusion Principle Applied	No
Skills Development	0.00
Enterprise & Supplier Development	0.00
Y.E.S Initiative	No
Y.E.S Target & 2.5 Absorption	No
Y.E.S Target & 5% Absorption	No
Double YES & 5% Absorption	No
Re-issue No.	1
Re-issue Date	22 May 2025
Issue Date	21 May 2025
Expiry Date	20 May 2026
Certificate Number	MOL20250521R1
Financial Period	28 February 2025

Technical Signatory: K Moloto

This BEE Certificate is issued in accordance with the Amended Construction Sector Code (Gazette Number 41287). The measured entity has provided documentation as proof of compliance when claiming each point against each element. MOLOTO BEE VERIFICATIONS CC retains copies of all documents presented and has issued this certificate in their place. MOLOTO BEE VERIFICATIONS CC shall retain ownership of the BEE Certificate. Should MOLOTO BEE VERIFICATIONS CC in its sole discretion adjudge that the measured entity is misusing the BEE Certificate, MOLOTO BEE VERIFICATIONS CC reserves the right to immediately withdraw the BEE Certificate and the measured entity shall, upon written request by MOLOTO BEE VERIFICATIONS CC forthwith return the BEE Certificate.

MOLOTO BEE VERIFICATIONS CC  
Reg: 2009/224855/23; ABP Membership No: AM00049



BVA025



Address: 1054 Irvine Street, Blue Valley Golf Estate, Centurion, 0046  
PO BOX 3401, Halfway House, 1685

Tel: 011 512 3047/9  
Email: [kate@molotosol.co.za](mailto:kate@molotosol.co.za) / [info@molotosol.co.za](mailto:info@molotosol.co.za)

Users are encouraged to confirm authenticity with the issuer to help curtail fraud

## **WE CURRENTLY HOLD SOLE AGENCIES FOR THE FOLLOWING PRODUCTS**

### **ROTATING EQUIPMENT**

MUNSCH Chemical Plastic Pumps  
HERMETIC Canned Motor Pumps  
DELASCO Peristaltic Pumps  
NOVA ROTORS Progressive Cavity Pumps  
LEISTRITZ Screw Pumps  
EBARA Chemical Norm and Process  
Pumps DICKOW Pumpen  
ASW Water Pumps  
ATLAS COPCO  
FINDER Pompe  
GRUPPO ATTURIA

### **WATER TREATMENT**

KSH Filter Strainers  
CADAR Monolithic Filter Floor Systems  
FAM Filters  
YAMIT Mobile Water Treatment Plants  
TEKLEEN Automatic Self Cleaning Filters

# ENGINEERING OFFERS

## MACHINING WORKSHOP

Turning

Surface Grinding

Production Run Machining

Milling

Small Quantity Machining

Precision Machining

## MECHANICAL & ELECTRICAL WORKSHOPS

### **We Repair Various Types of Pumps:**

Centrifugal Pumps

Peristaltic Pumps

Progressive Cavity Pumps

Compressors

Dosing Pumps

Canned Motor Pumps

Magnetic Drive Pumps

Gearboxes, Hydrostatic Drives

### **We also Repair Hydraulic Equipment Including:**

Cylinders

Pumps

Motors

Power-Packs

Valves

Lubrication Equipment

Hydraulic Control Stations

### **Our Service Department does:**

On Site Installations

Service Contracts

Upgrades

On Site Repairs

Refurbishments

Commissioning

# ASW SERVICES

## MECHANICAL WORKSHOP

In-house repairs to our range of products and any brand of rotating equipment including hydraulics.

Strip, inspect, quote, repair / assemble and test.



## SERVICE DEPARTMENT

24 Hour on site repairs and servicing of our products and all types of rotating equipment.

On site maintenance and inspection contracts for extended periods can be negotiated with clients.

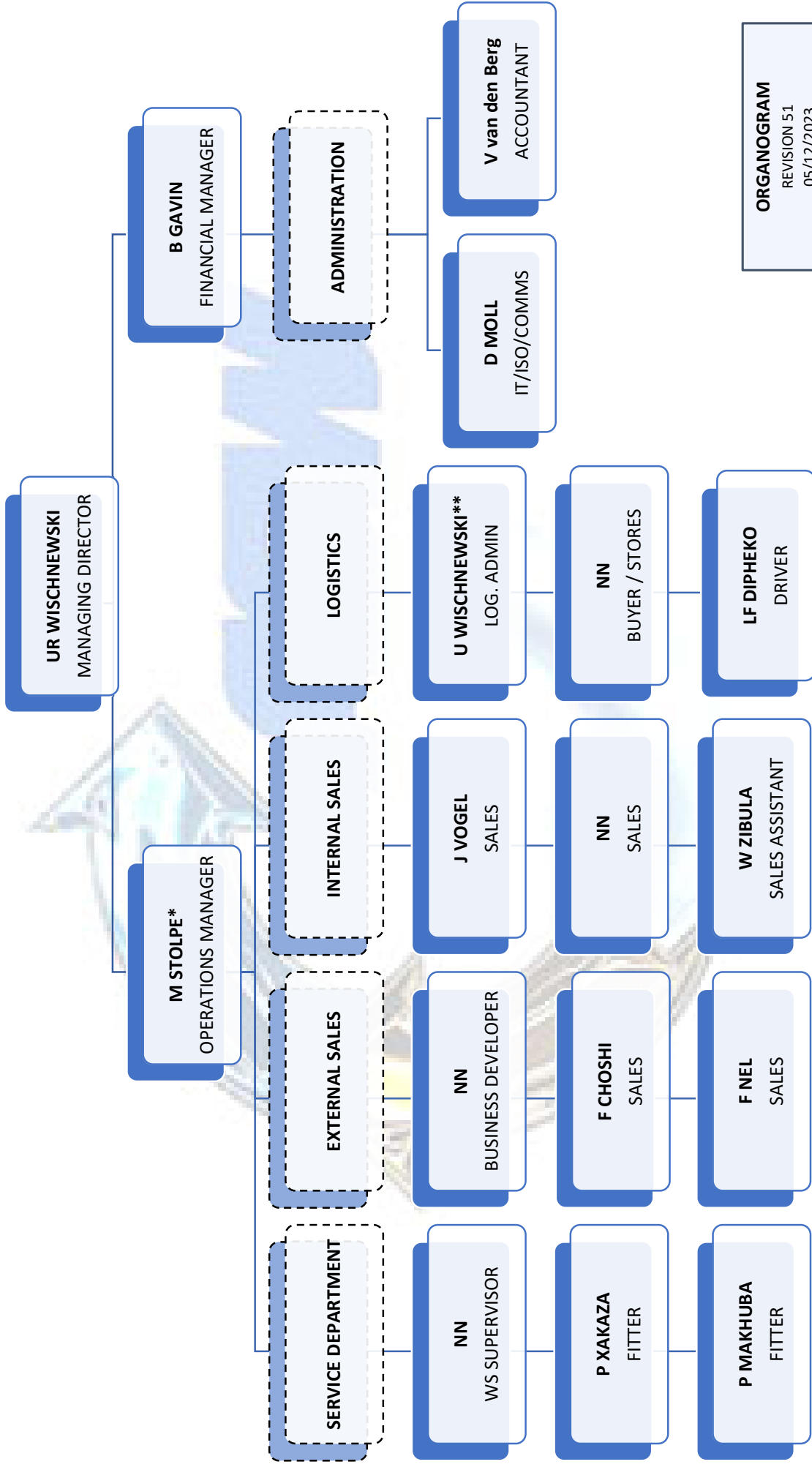


## MACHINING WORKSHOP

Precision machining for one-off or high volume quantities can be done.



# ASW Engineering Organization Chart



**ORGANOGRAM**  
 REVISION 51  
 05/12/2023  
 \* = QUALITY  
 \*\* = SHE REP

# OUR CUSTOMERS



## **THIS IS HOW YOU CAN CONTACT ASW**

**AT OUR HEAD OFFICE IN JOHANNESBURG**

**53 GERHARDUS STREET  
STRIJDOM PARK  
RANDBURG  
JOHANNESBURG  
SOUTH AFRICA**

**PO BOX 814  
RANDBURG  
SOUTH AFRICA  
2125**

**TEL: +27 (0)11 793 1330**

**EMAIL: [sales@asw.co.za](mailto:sales@asw.co.za)**

**WEB: [www.asw.co.za](http://www.asw.co.za)**